



TÄYDELLISTÄ HITSAUSTA

POWERLINER/POWERDRIVE

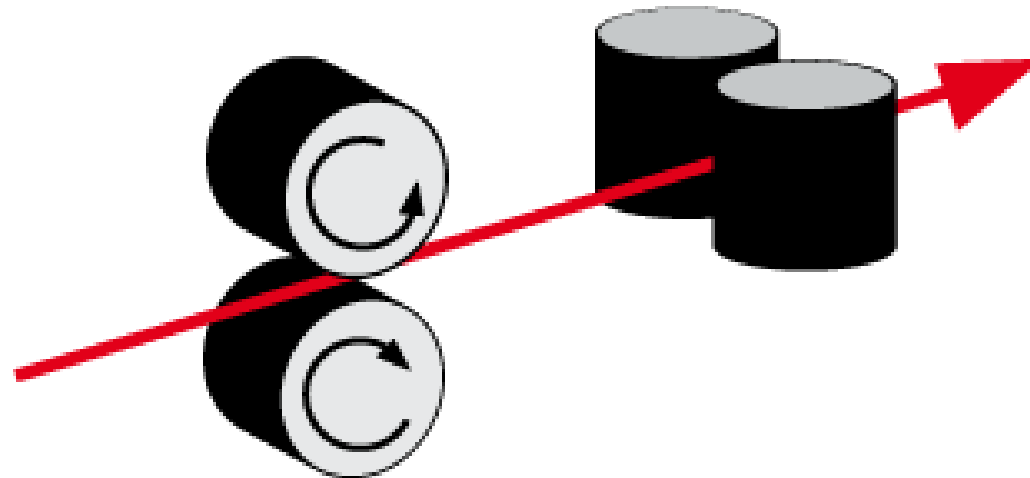


**WE HAVE THREE DIVISIONS
AND ONE PASSION:
SHIFTING THE LIMITS.**

WHAT IS POWERLINER?

- / New wirefeed system with rollers
- / Irrespective of the material and diameter of the wire (0.6 to 1.6 mm)
- / Inner liners no longer required
- / Virtually wear-free wirefeed
- / Easily copes with long distances between wirepools and welding system

HOW DOES POWERLINER WORK?

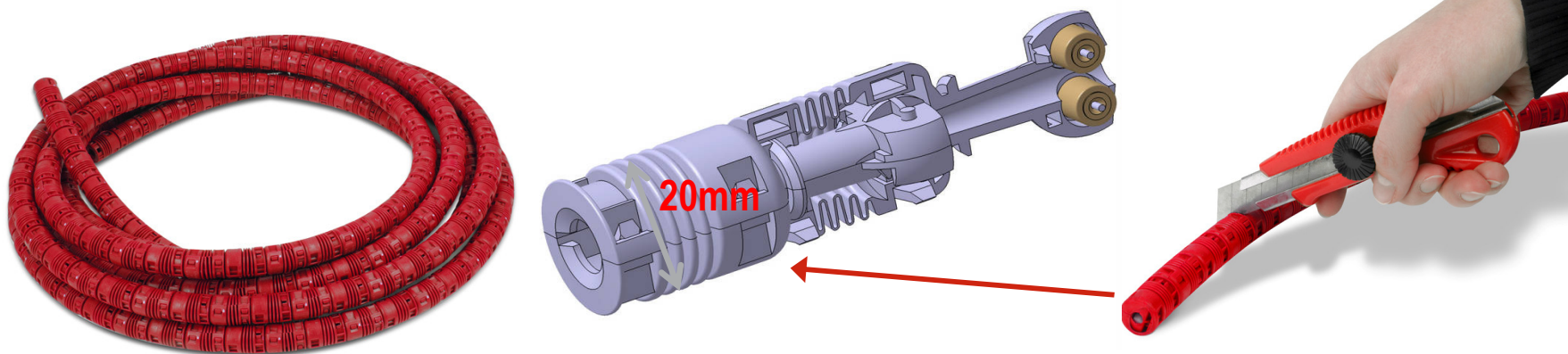


Rolling friction \ll dynamic friction!

- / Wirefeeding hose with rollers (instead of inner liners)
- / Wire is fed through rollers that are arranged at 90° to each other
→ so no dynamic friction

POWERLINER DETAILED DESIGN

- / Wirefeeding hose can be easily customised to a specific length
(can be prepared to any length)
 - / Just cut to the desired length
- / Can be lengthened or shortened at any time (advantage for repairs)



POWERLINER CORRUGATED PROTECTIVE HOSE

- / The corrugated protective hose can be used in even the most awkward routing situations
→ A big plus for robots and in shipbuilding!

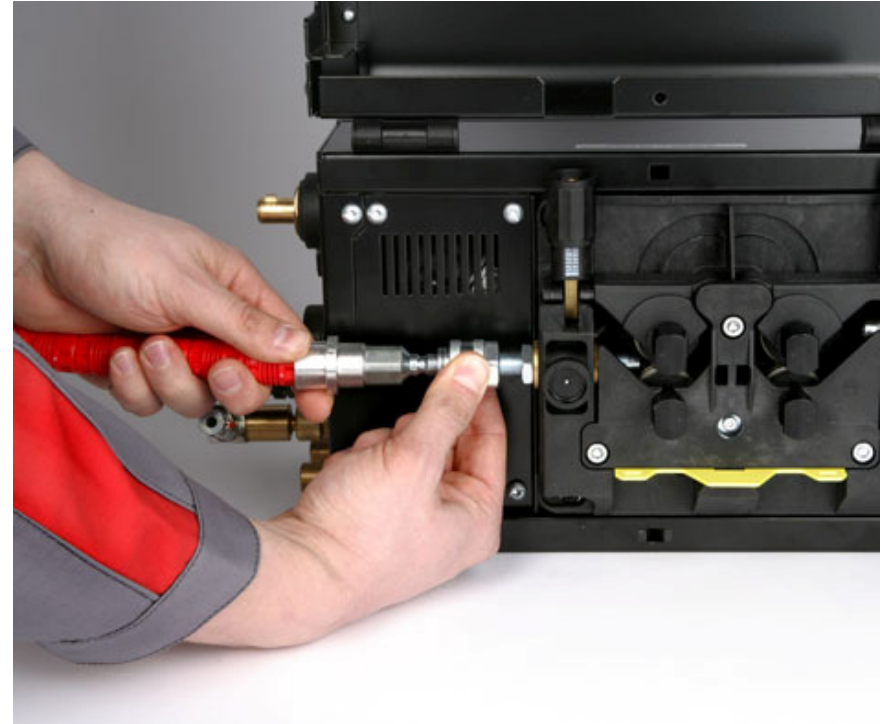
- **Perfect protection for a long service life**

- / Protects from welding spatter and bending
- / Can be fitted along the entire length of the wirefeeding hose to provide complete protection



QUICKCONNECT POWERLINER CONNECTION

Marathon pack QuickConnect connection Connection for wire-feed unit



QuickConnect ensures that the PowerLiner can be quickly and easily connected to and disconnected from large spool systems, wire drums, wire-feed units or welding torches

POWERLINER TECHNICAL DATA

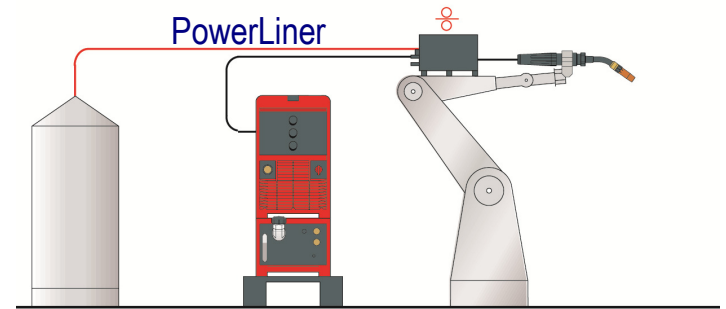
Description	Characteristic
Wire diameter	0.6 to 1.6 mm
Materials	Suitable for all materials
PowerLiner external diameter	20 mm
External diameter of corrugated protective hose	30 mm
Min. threading radius	150 mm
Min. bending radius	120 mm
Weight	150 g/m without corrugated protective hose 76 plastic rollers per metre
Length per pack	25 m PowerLiner roller
Threading direction	Wire can only be thread in from one end, the butt end

TWO APPLICATION AREAS FOR POWERLINER

- / As a retrofittable wirefeeding hose for special routing situations
- / As a component in the PowerDrive system

BENEFITS OF POWERLINER AS A WIREFEEDING HOSE

- / No abrasion due to extremely low forces exerted on the wire electrode
→ Increase in service life of wearing parts
 - / No damage to surface of wire
 - / Precise wire feeding produces stable arc
(tested up to 20 m in laboratory)
 - / Ideal for soft wire electrodes
 - / Low maintenance costs (no inner liners)
-
- / Existing systems can easily be changed to PowerLiner
(existing components do not have to be changed)
 - / When used in manual applications (e.g. shipbuilding), the low weight (wire-feed unit without wirespool) significantly reduces the amount of effort required, making the job a bit easier

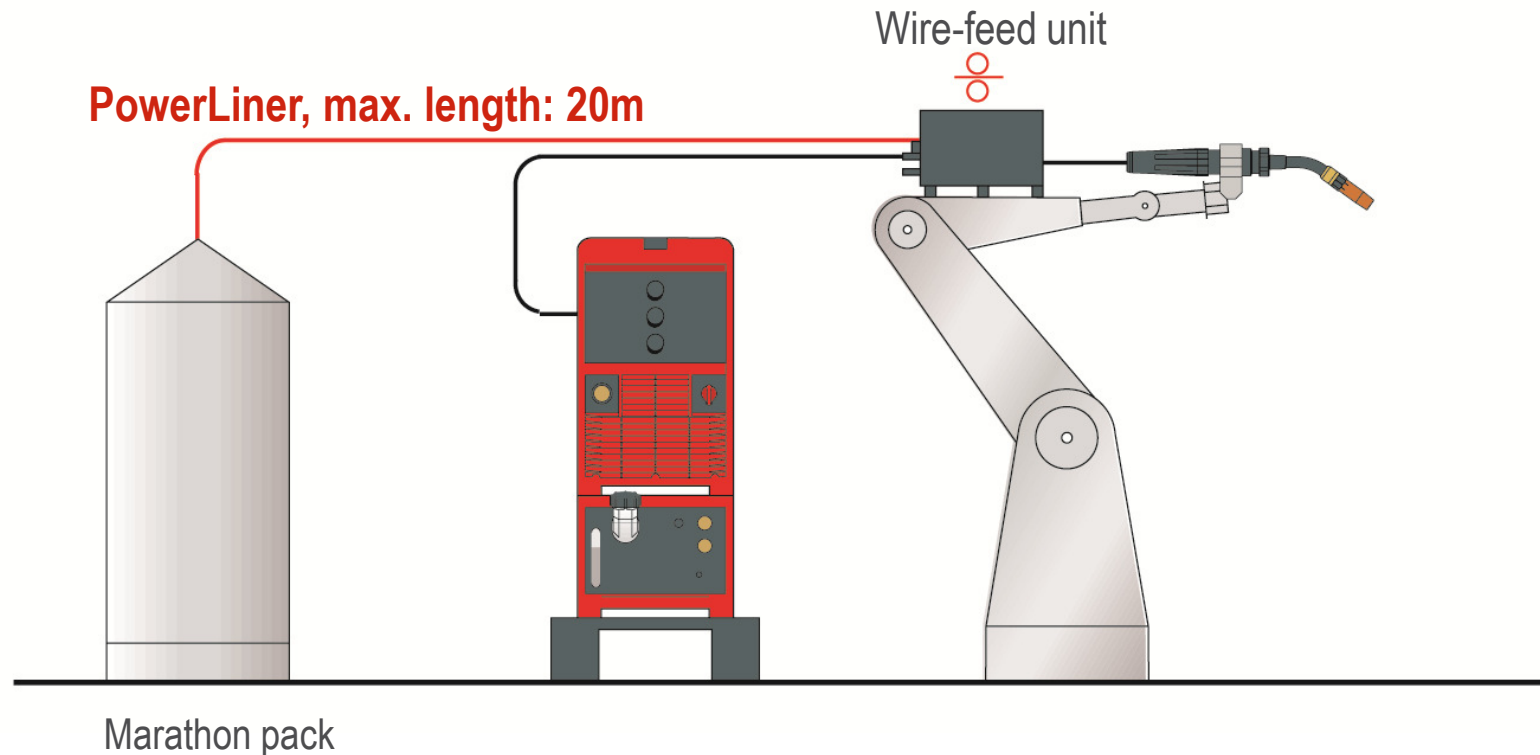


POWERLINER BENEFITS

- / Simple system layout due to greater flexibility in positioning of wirepools
- / Also very suitable for awkward routing situations or long distances
- / PowerLiner can be lengthened or shortened easily
 - can be customised to any length
- / No special inner liners necessary

- / Reduced costs:
 - no maintenance costs (wire-feed rollers and inner liners do not have to be changed)
 - long service life
 - only one drive necessary
- / Considerably longer wire-feeding distances possible

POWERLINER AS A WIREFEEDING HOSE CONFIGURATION EXAMPLE



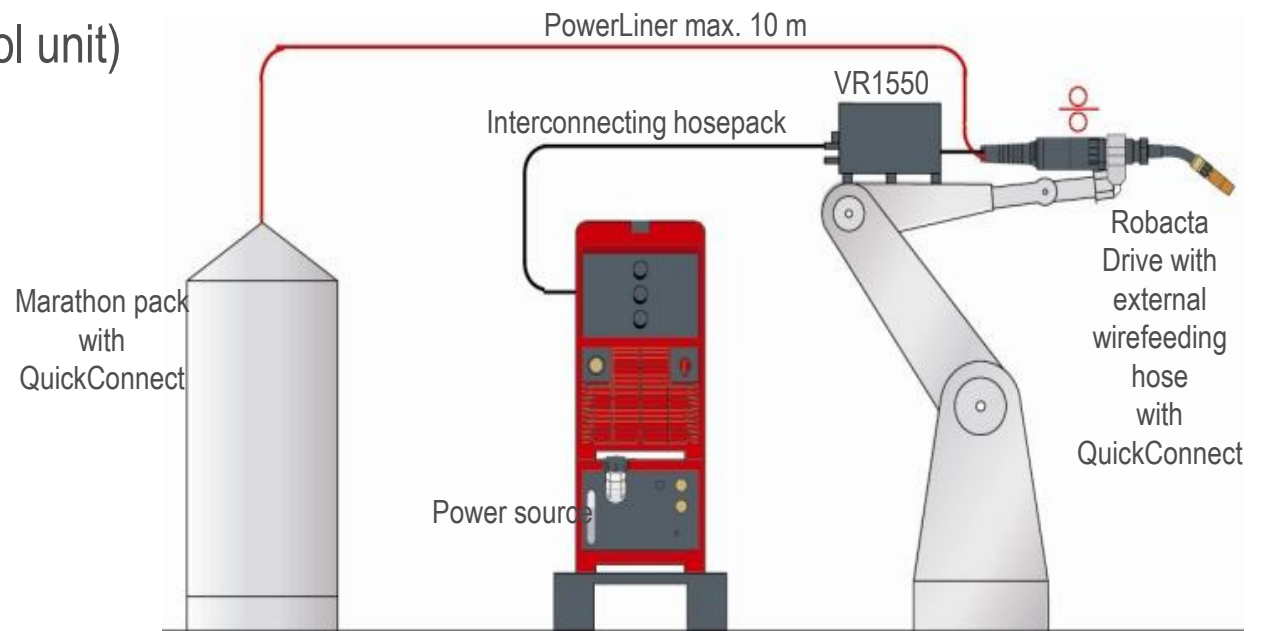
Note: PAP-compatible → also suitable for hollow-arm robots.

POWERLINER AS A SYSTEM COMPONENT FOR POWERDRIVE

What is PowerDrive?

One **system**, consisting of

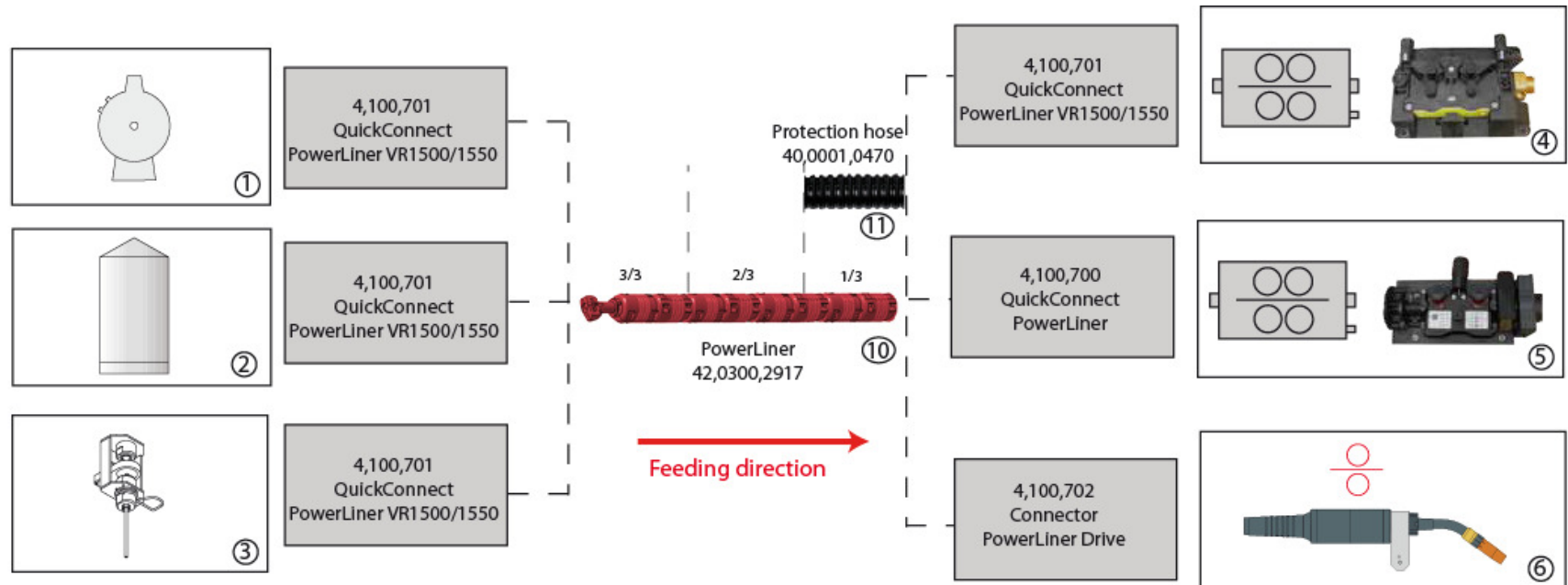
- / PowerLiner (wirefeeding hose with rollers)
- / Robacta Drive hosepack (with external wirefeeding hose) and
- / VR1550 (as a control unit)
- / QuickConnect



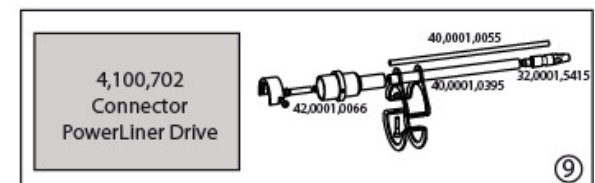
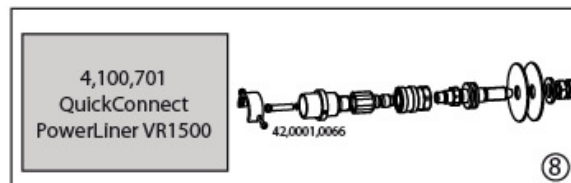
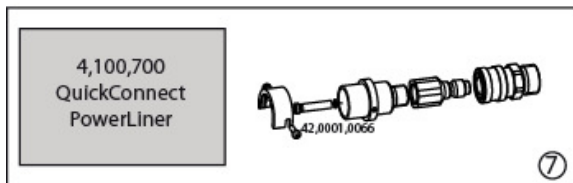
POWERDRIVE BENEFITS

- / Welding wire fed over rollers
 - / Less dynamic friction
 - / Virtually wear-free wirefeed
- / No inner liners
 - / Less downtime and lower replacement costs
- / Universal application for all wire types and wire diameters from 0.6 to 1.6 mm
- / Drive rollers in the wire-feed unit no longer need to be changed (no wear)
- / Energy saved as wire-feed motor not used
- / QuickConnect facilitates rapid connection/disconnection of the wirefeed system
- / Robacta Drive as a single drive

OVERVIEW OF POWERLINER



- | | |
|--------------------------------|---|
| 1) Wire coil | 7) QuickConnect PowerLiner VR5000 |
| 2) Marathon pack | 8) QuickConnect PowerLiner VR1500/1550 |
| 3) Wire end | 9) Connector PowerLiner Drive |
| 4) Wire feeder motor plate old | 10) PowerLiner (Yard ware) |
| 5) Wire feeder motor plate new | 11) Corrugated protection hose (Yard ware - approx. 1/3 from complete length) |
| 6) Robacta Drive | |



POWERDRIVE SYSTEM COMPONENT VR1550 AS A CONTROL UNIT

- / Wire-feed unit for the PowerDrive system
Robacta Drive as a stand-alone wire-feed unit,
no wearing parts required for the VR1550

Benefits of the VR1550 in other applications

- / Can be used across a range of processes with:
Robacta, Robacta Drive and Robacta Drive CMT
 - fewer variants reduce operating costs
 - greater flexibility (small dimensions)
 - reduction in investment costs



VR1550 WIRE-FEED UNIT

- / High degree of application standardisation
- / VR1550 can be used instead of VR7000 CMT → CMT wire-feed unit also has portal capability
- / VR1550 saves space
- / All VR1500 options can be used

PM43 PullMig controller conversion kit	4,100,519,U
CMT VR1550 installation kit	4,100,696



VR1550 WIRE-FEED UNIT TECHNICAL DATA

Supply voltage	55 V DC
Nominal current	4 A
Wire diameter	0.8 – 1.6 mm, 0.03 - 0.06 in.
Wire feed speed	0.5 – 22 m/min, 19.69 – 866.14 ipm
Torque	4 Nm
Degree of protection	IP 21
Dimensions l / w / h	405 / 208 / 205 mm, 15.94 / 8.19 / 8.07 in.
Weight	7 kg, 15.43 lb.
Drive	4 roller drive
Max. shielding gas pressure	7 bar, 101 psi
Max. coolant pressure	6 bar, 87 psi

Maahantuonti ja myynti:

PRONIUS

Pronius Oy
Keisarinviitta 20 B
33960 Pirkkala

+358 (0)44 200 9060
info@pronius.fi
www.pronius.fi